



Flexible Membrane Reinforcing & Bond Breaking

- Internal Corner 90°
- External Corner 270°
- Pipe & Tap Sleeve
- Bond Breaking Tape

DESCRIPTION

Crommelin Flexible Membrane Reinforcing & Bond Breaking is suitable for use with Crommelin liquid applied waterproofing membranes applied by brush or roller.

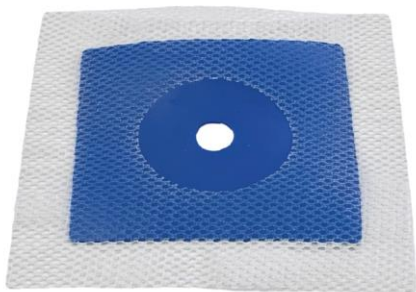
FEATURES AND BENEFITS

- Accommodates structural movement in vulnerable joint areas.
- Provides a flexible, seamless waterproof joint.
- Fast and easy application.
- Highly durable and tear resistant.
- Rot proof TPE rubber and polyester fabric construction.
- Suitable for use in conjunction with membranes approved to AS3740, AS4858 and the Australian Building Code.

AREAS OF USE

Flexible Membrane Reinforcing & Bond Breaking is suitable for use in the following areas:

- Showers & bathrooms.
- Laundries & kitchens.
- Retaining walls.
- Tanks.
- Balconies & roofs.
- Podiums & decks.
- Planter boxes.
- Ponds.



APPLICATION PROCESS

Full application instructions can be found at www.crommelin.com.au/full-instructions/

- Select the right Crommelin waterproofing membrane suitable for your project.
- Prepare surface and prime area as per membrane directions and allow to dry.

Internal Corner 90° & External Corner 270°:

- Apply a generous coat of membrane (minimum 0.6mm wet film thickness) to the surface with a brush, ensuring sufficient is applied to cover the entire back of the corner being installed and is applied thick enough to allow good adhesion. Do not allow the membrane to skin or dry before installing the corner.
- Push the corner into the wet membrane. Use a brush to ensure all edges of the corner are fully embedded into the membrane and all creases or air pockets are removed.
- Apply additional membrane to the top surface of the corner, ensuring that the corner is completely wet embedded.
- Once all corners have been installed, apply Crommelin Reinforcing and Bond Breaking tape to all remaining wall to wall and wall to floor joints, over-lapping on top of corners by approximately 50mm.
- Apply membrane to the entire surface area to be waterproofed as per instructions and coverage rates.
- Allow to dry thoroughly before application of a second membrane coat.
- Follow all instructions of waterproofing membrane being applied.
- Before tiling, over-coating or back filling, inspect joint detailing to ensure no gaps, pin holes or cracks are visible. If needed, apply further membrane coats to ensure a consistent film thickness.
- Note: Should the corner being waterproofed not be exactly 90°, with scissors snip approximately 20mm along each of the 3 fold lines before installation. This will allow for an easier flush corner finish to be achieved.

Note: If Flexible Membrane Reinforcing & Bond Breaking remains visible after application of the waterproofing membrane, further coats of membrane are required to ensure optimum film build.

Pipe & Tap Sleeve:

- Measure the diameter of the pipe penetration. Use half of this measurement to calculate the diameter of the hole to be cut. Eg. Pipe diameter 50mm / Sleeve hole 25mm. Using scissors cut a hole in the sleeve to the required width. To cut an even circle, first fold sleeve in half to form a semi-circle. After cutting, place sleeve over the pipe to ensure a flush and tight fit.
- Apply a generous coat of membrane (minimum 0.6mm wet film thickness) to the surface with a brush, ensuring sufficient is applied to cover the entire back of the sleeve being installed, and is applied thick enough to allow good adhesion. Do not allow the membrane to skin or dry before installing the sleeve.
- Slide prepared sleeve over pipe penetration and push sleeve into the wet membrane. Use a brush to ensure all edges of the corner are fully embedded into the membrane and all creases or air pockets are removed.
- Apply additional membrane to the top surface of the sleeve, ensuring that the sleeve is completely wet embedded.
- Apply membrane to the entire surface area to be waterproofed as per instructions and coverage rates.
- Before tiling, over-coating or back filling, inspect joint detailing to ensure no gaps, pin holes or cracks are visible. If needed, apply further membrane coats to ensure a consistent film thickness.

Note: If Flexible Membrane Reinforcing & Bond Breaking remains visible after application of the waterproofing membrane, further coats of membrane are required to ensure optimum film build.



Bond Breaking Tape:

- Apply a generous coat of membrane (minimum 0.6mm wet film thickness) to the surface either side of the joint with a brush, ensuring sufficient is applied to cover the entire back of the tape being installed and is applied thick enough to allow good adhesion. Do not allow the membrane to skin or dry before installing the corner.
- Push the tape into the wet membrane, locating the centre rubber section of the tape in the middle of the joint line. Use a brush to ensure all edges are fully embedded into the membrane and all creases or air pockets are removed.
- Apply additional membrane to the top surface of the tape, ensuring that the tape is completely wet embedded.
- If over-lapping already installed Crommelin Internal Corner 90°, External Corner 270° or Pipe & Tap Sleeve, over-lap on top by approximately 50mm.
- Apply membrane to entire surface to be waterproofed as per instructions & coverage rates.
- Before tiling, over-coating or back filling, inspect joint detailing to ensure no gaps, pin holes or cracks are visible. If needed, apply further membrane coats to ensure a consistent film.

Note: If Flexible Membrane Reinforcing & Bond Breaking remains visible after application of the waterproofing membrane, further coats of membrane are required to ensure optimum film build.

SIZES

Flexible Membrane Reinforcing & Bond Breaking is available in the following profiles;

- Internal Corner 90°
- External Corner 270°
- Pipe & Tap Sleeve
- Bond Breaking Tape

PRECAUTIONS

- It is essential to ensure the fabric is well embedded into the first coat of waterproofing membrane whilst the membrane is wet, and thoroughly wetted out.
- Where **Flexible Membrane Reinforcing & Bond Breaking** is used, drying times of waterproof membrane may be increased.

TRANSPORT AND STORAGE

- Size: Internal Corner 90° • Weight: 0.1kg • Cool and Dry Storage • UN Number: N/A
- External Corner 270° 0.1kg
- Pipe & Tap Sleeve 0.1kg
- Bond Breaking Tape 0.3kg
- DG Class: N/A • Flash Point: N/A • Hazchem Code: N/A • Poisons Schedule: N/A

Crommelin[®] and other marks followed by ® are registered trademarks.

Any advice, recommendation, information, assistance or service provided by Crommelin[®] in relation to its products or their use is given in good faith, however is provided without responsibility or liability. Customers need to undertake their own assessment to determine the suitability of a product for the intended use. As the performance of any product is subject to a wide variety of different surface types as well as environmental and surface-specific conditions, it is essential that a sample of the product be applied to the intended area of use to ensure it is acceptable in appearance and finish and that it performs as required on the specific surface.

Crommelin[®] also reserves the right to update information without prior notice, to reflect ongoing research and product development.